

## Security Camera Housing - Elphel Mono

**Camera Supported:** The Security Camera Housing is designed to protect the enclosed NC353L-369 camera from the elements, tampering, and detection. The interior is custom designed to fit the camera for any focus/zoom setting, while allowing full operation and power via an external Ethernet connection.

**Lenses Supported:** H2Z0414C-MP

**Housing Color:** Stealth Black

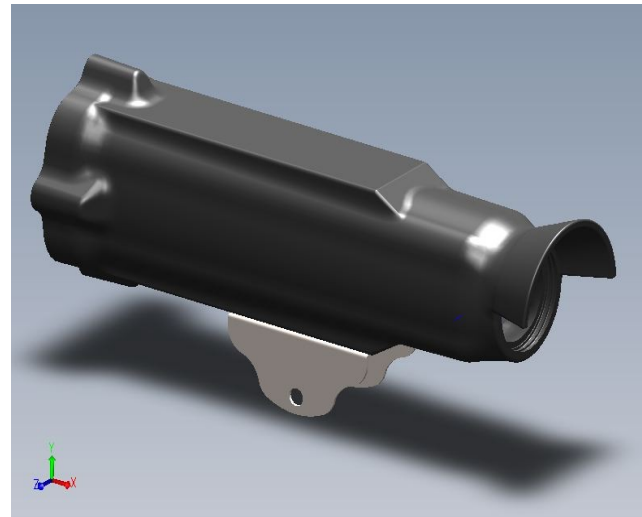
**Materials:** The housing is a silicon molded, polyurethane construction. Components and features are designed to last, and include stainless steel, aluminum and high strength plastics. All of the aluminum parts have been hard anodized for maximum protection and product longevity.

**Key Features:** The housing's high quality materials are designed to withstand nearly any weather condition. Moreover, its lightweight design makes its application easy and versatile. The dark, low profile design keeps the system out of view while the enclosure is tamperproof by design.

- Tamper proof screws prevent unauthorized access
- Marine grade aluminum backplate prevents overheating.
- Custom O-ring seals housing, keeping out all moisture.
- External Ethernet cable provides power and data.
- Front Lens Shade minimizes overhead glare.
- Optical-quality acrylic front element allows for clear images.
- All pieces are weatherproof and designed to last.
- Mounts easily and securely top or bottom.
- 360° swivel mounting system.

### Physical Specifications:

| Environmental Rating:  | Weight: | Physical Size:  |
|--|---------|---|
| Overall housing rated to a 10 meter depth Components are rated to IP-68 standard | TBD     | 295mm x 106mm x 106mm<br>11.6" x 4.2" x 4.2"<br>(L x H x D) |



**Warranty:** 1 Year. Please see Warranty Terms and Conditions included with purchase.

### About Mercurien Limited

Mercurien is an Australian software-as-a-service company that has developed a world-leading transaction processing platform with applications in car parking and toll roads. We have developed sophisticated computer vision technologies to process millions of images over the web at a low cost relatively to conventional approaches.

As part of our design solution for Tolling and Car parks, we have developed high quality enclosures that enable HD images to be used across diverse environmental conditions. Mercurien has also developed automatic configurations for the Elphel cameras to ensure users can immediately plug and play.

If you would like further information on our enclosures or our auto configuration set up, please feel free to contact us on email: <mailto:sales@mercurien.com>

